



LESI Education Committee Task Force (LESI Academy)

April 7, 2013

LESI Education Committee Task Force/Leadership Team

CO-CHAIRS

- Rob McInnes (Australia)
- Jeffrey Whittle (US/Canada)



VICE CHAIRS

- Regula Altmann (Europe)
- Ronald Courtney (Europe)
- Marek Lazewski (Europe)
- Kei Konishi (Japan)
- Michael Samardzija (US/Canada)
- Tatiana Campello Lope (Brazil)
- Rashid Khan (Arab Countries)

Goal of the Project

- Create and manage content and facilitate “Core-Educational” course delivery for “Learning” Best Practices
 - Consistency/Coherency for both “pathway” and “one-off” (specific topic) courses
 - Identify potential “holes” in content
- Enhance Publicity/Availability/Delivery
- Propose structure for the LESI Academy

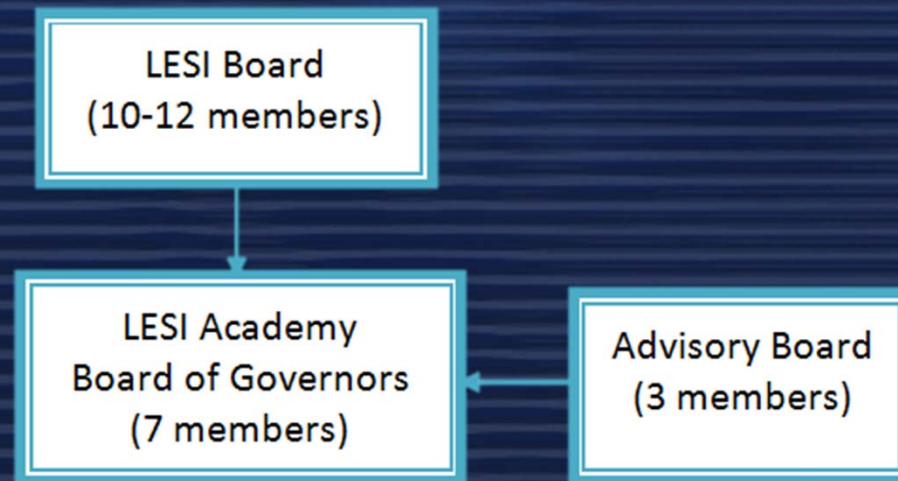


Issues 1-4

- Curriculum Development
- Composition of Curriculum
- Delivery of Curriculum
- Structure and Governance of the LESI Academy



Structure/Governance of LESI Academy



Why Is This Important?

- Consistency In Education Leadership and Content Management
- More Effective Management of Instructor Demand
- Less Travel/Expense for Instructors
- More Consistency in Content Delivery
- Clear Pathway for Student Learning (particularly toward CLP)

What are Benefits to Our Member Society?

- Benefits of Online e-Learning for society members (guided pathways for local requirements/needs)
- Consistent Educational Program Management
- Flexibility, e.g., Still Allows/Encourages Hands-On Live Programs and Workshops at Various Levels

Recent Task Force Activities

- Prepare Request for Information (RFI) for Learning Management System (LMS)
- Investigate IT System Constraints/Needs
- Prepare, Conduct, and Process Major Society Survey
- Focus on Core Curriculum and Pathway Development (Refinement)

Next Steps

- Issue/Circulate RFI for LMS
- Process Responses from RFI
- Continue to Communicate with Member Societies on Needs/Issues/Concerns
- Liaison with Executive Director of LESI on IT System Needs and Potential Vendor Interface
- Provide Recommendations for Philadelphia Meeting to LESI Board

LESI Academy Task Force

- QUESTIONS?